



Quality • Value • Commitment

AIR MOVEMENT



Adjustable Pitch Prop Engineered for the

**Marine Industry**



# Series 44M Marine Duct Axial Blower

## The Hartzell Advantage

Hartzell Air Movement has been manufacturing high quality marine fans since the 1970s and has many years of experience in providing insight and innovation to meet the expanding corrosive environment needs of our customers. We have a wide range of products combined

with our knowledgeable service and support to meet our customers' marine environment challenges.

Why choose Hartzell:

- Multiple mounting configurations, coatings, and colors available
- Customization available to meet the ultimate needs of the customer
- A full range of marine duty fans, covering all levels of static pressure

## Series 44M – Type AM Adjustable Pitch Prop

The AM propeller used in the duct axial line is a die-cast aluminum, airfoil design, with adjustable pitch blades, and with multiple blade configurations available. Its design is rugged; its function is to move large volumes of air at medium static pressures up to 4 inches.



*AM prop is pending AMCA approval*

## Series 44M Marine Duty Duct Axial Blowers with AM Adjustable Pitch Prop

Hartzell's heavy-duty line of direct drive marine duct axial blowers with the AM propeller is available in sizes 12" through 48". Air deliveries go up to 65,000 CFM. Units operate efficiently up to 4" static pressure. The AM blower is a duct axial fan type combining the best features of the rugged, highly efficient vaneaxial blower and the economical performance of a duct fan. The propeller design is adjustable pitch. Rigid motor mounts provide support for the foot mounted totally enclosed fan cooled motor that is furnished as standard.





# Series 44M Performance Tables

## with AM Adjustable Pitch Prop

### Series 44-M, Size 12, 1160 RPM

Model 44-M-125AM ST (5 - Blade)				
Bld. Ang. Range	CFM Range	SP	dBA Range	BHP Range
25-50	756-1380	0	55-73	0.03-0.16
25	180	0.25	53	0.04

### Series 44-M, Size 12, 1750 RPM

Model 44-M-125AM ST (5 - Blade)				
Bld. Ang. Range	CFM Range	SP	dBA Range	BHP Range
25-50	1140-2082	0	68-71	.09-.31
25-50	929-1532	0.25	66-77	.11-.29
25	344	0.5	66	0.11
25	174	0.75	66	0.13

### Series 44-M, Size 12, 3450 RPM

Model 44-M-125AM ST (5 - Blade)				
Bld. Ang. Range	CFM Range	SP	dBA Range	BHP Range
25-40	2248-3473	0	88-91	0.68-1.53
25-40	2151-3301	0.25	87-90	0.73-1.58
25-40	2047-3136	0.5	87-89	0.77-1.61
25-40	1942-2996	0.75	86-93	0.82-1.62
25-40	1814-2838	1	86-95	0.87-1.616
25	1091	1.25	86	0.78
25	933	1.5	86	0.78
25	785	1.75	86	0.82
25	643	2	86	0.89
25	518	2.25	86	0.95
25	440	2.5	86	0.97
25	382	2.75	86	0.97
25	321	3	86	0.97
25	248	3.25	86	0.98
25	159	3.5	86	1

### Series 44-M, Size 16, 1160 RPM

Model 44-M-165AM ST (5 - Blade)				
Bld. Ang. Range	CFM Range	SP	dBA Range	BHP Range
25-50	1934-3238	0	63-68	0.14-0.34
25-45	1405-2174	0.25	62-65	0.17-.26
25	271	0.5	62	0.19

### Series 44-M, Size 16, 1750 RPM

Model 44-M-165AM ST (5 - Blade)				
Bld. Ang. Range	CFM Range	SP	dBA Range	BHP Range
25-50	2917-4885	0	75-79	0.47-1.18
25-50	2575-4423	0.25	73-79	0.51-1.19
25-50	2284-3809	0.5	73-77	0.56-1.19
25	832	0.75	73	0.56
25	570	1	73	0.61
25	279	1.25	73	0.66

### Series 44-M, Size 16, 3450 RPM

Model 44-M-165AM ST (5 - Blade)				
Bld. Ang. Range	CFM Range	SP	dBA Range	BHP Range
25-32.5	5751-7121	0	93-95	3.57-4.66
25-32.5	5556-6987	0.25	93-94	3.63-4.8
25-32.5	5377-6846	0.5	92-94	3.71-4.92
25-30	5212-6120	0.75	92-92	3.8-4.59
25-30	5062-5959	1	91-92	3.9-4.72
25-30	4931-5782	1.25	91-91	4.00-4.83
25-30	4796-5585	1.5	91-91	4.11-4.95
25	4651	1.75	91	4.22
25	4448	2	91	4.32
25	4109	2.25	91	4.42
25	2569	2.5	91	4.21
25	1787	2.75	91	4.24
25	1588	3	91	4.33
25	1447	3.25	91	4.43
25	1319	3.5	91	4.54
25	1196	3.75	91	4.64
25	1057	4	91	4.73

### Series 44-M, Size 18, 870 RPM

Model 44-M-186AM ST (6 - Blade)				
Bld. Ang. Range	CFM Range	SP	dBA Range	BHP Range
20	1569	0	57	0.04
20	530	0.25	58	0.06

### Series 44-M, Size 18, 1160 RPM

Model 44-M-186AM ST (6 - Blade)				
Bld. Ang. Range	CFM Range	SP	dBA Range	BHP Range
20-32.5	2092-3261	0	65-66	.09-.208
20-32.5	1483-2646	0.25	64-65	.13-.260
20	580	0.5	66	0.13
20	122	0.75	66	0.15

### Series 44-M, Size 18, 1750 RPM

Model 44-M-186AM ST (6 - Blade)				
Bld. Ang. Range	CFM Range	SP	dBA Range	BHP Range
20-45	3156-6538	0	76-84	.32-1.47
20-45	2883-6093	0.25	75-83	.36-1.53
20-45	2452-5506	0.5	75-82	.42-1.58
20	1549	0.75	77	0.43
20	1084	1	77	0.45
20	725	1.25	77	0.46
20	401	1.5	77	0.49
20	144	1.75	77	0.54

*Series 44-M, Size 18, 3450 RPM shown on page 4*

Performance is shown for installation type D: ducted inlet/ducted outlet.  
Performance ratings do not include the effects of appurtenances (Accessories).

# Series 44M Performance Tables

## with AM Adjustable Pitch Prop

### Series 44-M, Size 18, 3450 RPM

Model 44-M-186AM ST (6 - Blade)				
Bld. Ang. Range	CFM Range	SP	dBA Range	BHP Range
20-30	6223-8984	0	94-96	2.43-4.79
20-30	6098-8821	0.25	93-96	2.52-4.9
20-25	5965-7493	0.5	93-96	2.62-3.63
20-25	5821-7341	0.75	93-95	2.71-3.77
20-25	5666-7179	1	92-95	2.81-3.92
20-25	5492-7007	1.25	92-94	2.91-4.05
20-25	5294-6823	1.5	92-94	3.01-4.22
20-25	5061-6622	1.75	92-93	3.12-4.38
20-25	4756-6395	2	93-94	3.24-4.55
20-25	4340-6119	2.25	93-94	3.34-4.68
20	3849	2.5	93-95	3.27-3.27
20	3304	2.75	94-95	3.24-3.24
20	2957	3	94	3.27
20	2706	3.25	95	3.31
20	2479	3.5	95	3.35
20	2254	3.75	95	3.39
20	2044	4	95	3.43

### Series 44-M, Size 21, 870 RPM

Model 44-M-215AM ST (5 - Blade)				
Bld. Ang. Range	CFM Range	SP	dBA Range	BHP Range
20-30	2189-3273	0	61-62	.08-.131
20-25	712-955	0.25	61-65	.09-.12

### Series 44-M, Size 21, 1160 RPM

Model 44-M-215AM ST (5 - Blade)				
Bld. Ang. Range	CFM Range	SP	dBA Range	BHP Range
20-30	2918-4364	0	68-70	.19-.31
20-30	2173-3516	0.25	69-70	.22-.38
20-25	686-1006	0.5	68-72	.21-.28
25	219	0.75	72	0.33

### Series 44-M, Size 21, 1750 RPM

Model 44-M-215AM ST (9 - Blade)				
Bld. Ang. Range	CFM Range	SP	dBA Range	BHP Range
20-32.5	4402-7094	0	80-82	.67-1.23
20-32.5	3971-6620	0.25	79-82	.71-1.32
20-32.5	3458-5994	0.5	79-81	.76-1.41
20-32.5	2635-5199	0.75	79-81	.77-1.45
20-25	1472-1962	1	79-84	.73-.94
20-25	761-1210	1.25	79-84	.71-.98
20-25	316-669	1.5	79-84	.72-1.07
25	267	1.75	84	.76-1.16

### Series 44-M, Size 24, 870 RPM

Model 44-M-249AM ST (9 - Blade)				
Bld. Ang. Range	CFM Range	SP	dBA Range	BHP Range
20-35	3289-6036	0	66-67	.15-.36
20-35	2429-5077	0.25	65-66	.20-.46
20-30	1074-1574	0.5	65-69	.21-.37
20-30	120-403	0.75	65-69	.23-.47

### Series 44-M, Size 24, 1160 RPM

Model 44-M-249AM ST (9 - Blade)				
Bld. Ang. Range	CFM Range	SP	dBA Range	BHP Range
20-45	4385-10236	0	73-76	.35-1.59
20-45	3896-9469	0.25	72-75	.42-1.7
20-45	4966-8247	0.5	72-76	.48-1.78
20-30	1912-2753	0.75	72-76	.48-.81
20-30	1049-1611	1	72-76	.49-.90
20-30	320-747	1.25	72-76	.51-1.05
30	183	1.5	72-76	.56-1.21

### Series 44-M, Size 24, 1750 RPM

Model 44-M-249AM ST (9 - Blade)				
Bld. Ang. Range	CFM Range	SP	dBA Range	BHP Range
20-32.5	6616-11008	0	84-85	1.19-2.4
20-32.5	6323-10669	0.25	83-84	1.31-2.65
20-32.5	5984-10290	0.5	82-83	1.42-2.83
20-32.5	5562-9850	0.75	82-82	1.53-3.02
20-32.5	4925-9305	1	82-82	1.61-3.2
20-30	4138-7714	1.25	82-87	1.64-2.99
20-30	3402-4948	1.5	82-87	1.50-2.66
20-30	2784-4008	1.75	82-87	1.66-3.27
20-30	2212-3233	2	82-87	1.67-2.94
20-30	1642-2502	2.25	82-87	1.67-3.09
20-30	1083-1854	2.5	82-87	1.66-3.27
20-30	618-1307	2.75	82-87	1.71-3.51
20-30	282-865	3	82-87	1.81-3.76
30	496	3.25	82	4.0

Performance is shown for installation type D: ducted inlet/ducted outlet.  
Performance ratings do not include the effects of appurtenances (Accessories).

# Series 44M Performance Tables

## with AM Adjustable Pitch Prop

### Series 44-M, Size 28, 870 RPM

Model 44-M-289AM ST (9 - Blade)				
Bld. Ang. Range	CFM Range	SP	dBA Range	BHP Range
20-45	4676-11152	0	71-75	.26-.97
20-45	3633-9838	0.25	71-74	.31-1.05
20-30	1700-2890	0.5	70-73	.30-.50
20-30	320-1024	0.75	70-73	.30-.58

### Series 44-M, Size 28, 1160 RPM

Model 44-M-289AM ST (9 - Blade)				
Bld. Ang. Range	CFM Range	SP	dBA Range	BHP Range
20-32.5	6234-10766	0	72-80	.61-1.21
20-32.5	5696-9971	0.25	71-79	.68-1.42
20-32.5	4610-8969	0.5	71-78	.73-1.58
20-30	3053-6580	0.75	71-81	.71-1.27
20-30	1641-3063	1	78-81	.68-1.21
20-30	714-1802	1.25	78-81	.69-1.31
25-30	386-708	1.5	81	1.03-1.49

### Series 44-M, Size 28, 1750 RPM

Model 44-M-289AM ST (9 - Blade)				
Bld. Ang. Range	CFM Range	SP	dBA Range	BHP Range
20-45	9405-22438	0	83-93	2.11-7.91
20-45	9092-21902	0.25	83-93	2.20-8.09
20-45	8714-21316	0.5	82-93	2.29-8.27
20-45	8158-20653	0.75	81-93	2.40-8.43
20-45	7339-19834	1	81-92	2.48-8.58
20-45	6635-18753	1.25	81-92	2.50-8.68
20-45	5793-17633	1.5	81-92	2.50-8.74
20-45	4449-16606	1.75	88-91	2.43-8.78
20-30	3534-5946	2	88-91	2.42-4.04
20-30	2546-4726	2.25	88-91	2.26-4.14
20-30	1916-3836	2.5	88-91	2.33-4.26
20-30	1302-3051	2.75	88-91	2.35-4.42
20-30	721-2174	3	88-91	2.39-4.64
25-30	959-1436	3.25	91	3.43-4.92
25-30	391-891	3.5	91	3.43-4.92
30	422	3.75	91	3.60-5.52

### Series 44-M, Size 32, 870 RPM

Model 44-M-329AM ST (9 - Blade)				
Bld. Ang. Range	CFM Range	SP	dBA Range	BHP Range
20-40	6152-14091	0	73-76	.34-1.30
20-40	4687-12340	0.25	73-75	.40-1.49
20-37.5	2220-9168	0.5	73-78	.38-1.40
25-32.5	1190-2017	0.75	73-78	.37-1.03

### Series 44-M, Size 32, 1160 RPM

Model 44-M-329AM ST (9 - Blade)				
Bld. Ang. Range	CFM Range	SP	dBA Range	BHP Range
20-45	8202-21199	0	80-84	.82-4.17
20-45	7233-19926	0.25	81-83	.89-4.42
20-45	5843-18508	0.5	81-83	.95-4.59
20-45	3945-16801	0.75	80-85	.90-4.68
20-32.5	2303-5504	1	80-83	.88-2.16
20-32.5	924-3251	1.25	80-83	.86-2.36
25-32.5	692-1414	1.5	80-83	.84-2.64

### Series 44-M, Size 32, 1750 RPM

Model 44-M-329AM ST (9 - Blade)				
Bld. Ang. Range	CFM Range	SP	dBA Range	BHP Range
20-45	12374-31981	0	91-95	2.8-14.31
20-45	11763-31155	0.25	90-95	2.91-14.71
20-40	11101-26614	0.5	91-94	3.02-11.45
20-40	10388-25730	0.75	91-93	3.14-11.81
20-40	9482-24836	1	91-93	3.23-12.13
20-40	8342-23972	1.25	91-93	3.25-12.39
20-40	7358-23018	1.5	92-93	3.20-12.60
20-40	5713-21966	1.75	92-96	3.09-12.78
20-40	4556-20608	2	92-94	3.06-12.84
20-32.5	3587-8646	2.25	92-94	3.02-4.70
20-32.5	2530-6321	2.5	92-94	2.98-4.66
20-32.5	1691-5277	2.75	92-94	2.95-4.66
20-32.5	901-4247	3	92-94	2.92-4.72
25-32.5	1592-2881	3.25	94	4.87
25-32.5	722-1833	3.5	94	5.13
30-32.5	816-1062	3.75	94	5.45

### Series 44-M, Size 36, 870 RPM

Model 44-M-369AM ST (9 - Blade)				
Bld. Ang. Range	CFM Range	SP	dBA Range	BHP Range
25-50	10241-24068	0	79-83	.70-3.70
25-50	8616-21992	0.25	78-81	.81-3.90
25-50	6469-19325	0.5	78-81	.86-3.99
25-32.5	2823-5211	0.75	77-82	.78-1.44
25-32.5	516-1578	1	77-82	.75-1.64

### Series 44-M, Size 36, 1160 RPM

Model 44-M-369AM ST (9 - Blade)				
Bld. Ang. Range	CFM Range	SP	dBA Range	BHP Range
25-50	13660-32091	0	83-90	1.61-8.86
25-50	12340-30590	0.25	82-89	1.79-9.06
25-50	11235-28935	0.5	81-89	1.94-9.30
25-50	9621-27004	0.75	80-88	2.03-9.44
25-50	7727-24790	1	83-90	1.99-9.47
25-32.5	4457-8166	1.25	84-90	1.88-3.42
25-32.5	2768-4686	1.5	84-90	1.76-3.47
25-32.5	864-2319	1.75	84-90	1.76-3.83
32.5	506	2	90	4.33

### Series 44-M, Size 36, 1750 RPM

Model 44-M-369AM ST (9 - Blade)				
Bld. Ang. Range	CFM Range	SP	dBA Range	BHP Range
25-40	20607-39984	0	93-99	5.53-16.96
25-40	19679-39137	0.25	93-99	5.81-17.81
25-40	18833-38282	0.5	92-98	6.07-18.58
25-40	18090-37385	0.75	92-98	6.32-19.27
25-40	17364-36439	1	92-97	6.55-19.83
25-37.5	16582-32132	1.25	91-97	6.76-19.16
25-37.5	15523-31163	1.5	91-97	6.91-19.47
25-37.5	14317-30113	1.75	91-98	6.97-19.92
25-37.5	13128-11806	2	91-98	6.97-19.92
25-37.5	11806-2785	2.25	91-100	6.86-19.94
25-35	10184-23048	2.5	96-100	6.66-15.86
25-32.5	7700-14041	2.75	96-100	6.50-13.09
25-32.5	5826-10778	3	96-100	6.36-11.70
25-32.5	4818-8572	3.25	96-100	6.15-11.78
25-32.5	3742-6365	3.5	96-100	5.98-12.06
25-32.5	2387-4768	3.75	96-100	5.93-12.58
25-32.5	1231-3410	4	96-100	6.04-13.21

Performance is shown for installation type D: ducted inlet/ducted outlet.  
Performance ratings do not include the effects of appurtenances (Accessories).

# Series 44M Performance Tables

## with AM Adjustable Pitch Prop

### Series 44-M, Size 40, 870 RPM

Model 44-M-40CAM ST (12 - Blade)				
Bld. Ang. Range	CFM Range	SP	dBA Range	BHP Range
25-50	13758-32950	0	82-85	1.31-7.26
25-50	12339-31045	0.25	82-85	1.50-7.65
25-50	10768-28604	0.5	82-84	1.67-7.95
25-50	7752-25574	0.75	81-84	1.66-8.09
25-32.5	4909-7848	1	81-85	1.62-3.46
25-32.5	1683-3534	1.25	81-85	1.52-3.52
30	530	1.5	83	3.3

### Series 44-M, Size 40, 1160 RPM

Model 44-M-40CAM ST (12 - Blade)				
Bld. Ang. Range	CFM Range	SP	dBA Range	BHP Range
40-50	35408-43998	0	87-93	3.10-17.2
40-50	34199-42562	0.25	86-93	3.36-17.74
40-50	32890-41040	0.5	86-92	3.60-18.24
40-50	31388-39285	0.75	87-92	3.83-18.65
40-50	29579-37140	1	89-92	4.01-18.97
40-50	27291-34809	1.25	89-92	3.98-8.21
50	32474	1.5	91	19.16

### Series 44-M, Size 44, 870 RPM

Model 44-M-44CAM ST (12 - Blade)				
Bld. Ang. Range	CFM Range	SP	dBA Range	BHP Range
25-50	15847-40589	0	84-89	2.47-9.06
25-50	13950-38237	0.25	84-88	2.63-9.55
25-50	11660-35591	0.5	84-87	2.69-9.93
25-50	8526-32437	0.75	82-88	2.65-10.14
25-37.5	6027-14327	1	82-88	2.67-5.29
25-37.5	2539-7166	1.25	82-88	2.51-5.27
30-37.5	720-1901	1.5	85-88	3.54-5.97

### Series 44-M, Size 44, 1160 RPM

Model 44-M-44CAM ST (12 - Blade)				
Bld. Ang. Range	CFM Range	SP	dBA Range	BHP Range
25-50	21137-54224	0	90-96	5.87-21.46
25-50	19771-52398	0.25	91-96	6.11-22.17
25-50	18241-50564	0.5	91-95	6.27-22.77
25-50	16535-48600	0.75	91-95	6.34-23.31
25-50	14714-46491	1	91-95	6.38-23.71
25-50	12520-44115	1.25	90-95	6.31-23.98
25-50	9974-41390	1.5	90-97	6.30-24.13
25-37.5	8284-19564	1.75	90-95	6.34-12.48
25-37.5	5785-14520	2	90-95	6.20-12.33
25-37.5	3083-9092	2.25	90-95	5.92-12.53
30-37.5	2387-4440	2.5	92-95	8.08-13.25
32.5-37.5	1566-1785	2.75	93-95	10.1-14.6

### Series 44-M, Size 48, 870 RPM

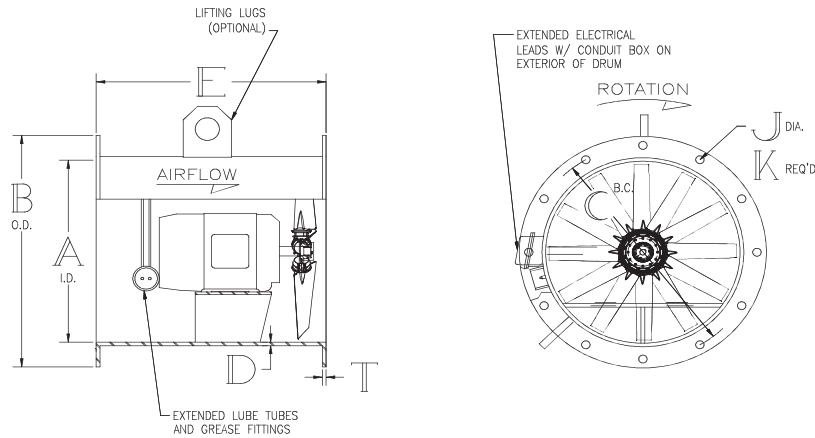
Model 44-M-48GAM ST (16 - Blade)				
Bld. Ang. Range	CFM Range	SP	dBA Range	BHP Range
25-45	18914-49465	0	87-91	2.95-10.99
25-45	17108-47615	0.25	88-91	3.10-11.75
25-45	15168-45438	0.5	87-91	3.14-12.48
25-45	13005-42510	0.75	87-92	3.16-13.19
25-45	10570-38232	1	85-92	3.21-13.59
25-37.5	8122-18776	1.25	81-85	3.24-7.89
25-37.5	4920-13580	1.5	81-85	3.11-7.99
25-37.5	1110-5809	1.75	81-85	2.87-9.2
32.5-37.5	1095-1520	2	80-81	6.35-9.41

### Series 44-M, Size 48, 1160 RPM

Model 44-M-48GAM ST (16 - Blade)				
Bld. Ang. Range	CFM Range	SP	dBA Range	BHP Range
25-45	25218-65953	0	93-98	8.83-27.97
25-45	23878-64532	0.25	94-98	9.05-29.01
25-45	22499-63110	0.5	95-98	9.2-30.06
25-45	2156-61540	0.75	95-98	9.27-31.05
25-45	19547-59764	1	95-98	9.30-32.00
25-45	17940-57566	1.25	94-98	9.32-32.90
25-45	16056-54796	1.5	93-99	9.35-33.64
25-45	14284-51392	1.75	92-99	9.43-34.00
25-40	12609-40903	2	92-99	9.52-26.37
25-37.5	10584-24617	2.25	92-98	9.51-20.29
25-37.5	8253-21296	2.5	92-98	9.37-20.44
25-37.5	5760-15959	2.75	92-98	9.13-20.44
30-37.5	2622-10508	3	92-98	8.75-20.98
30-37.5	3383-5225	3.25	92-98	8.50-21.95
30, 35	1965-2476	3.5	97	16.68

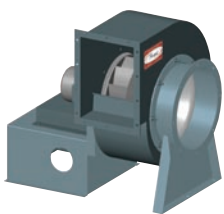
Performance is shown for installation type D: ducted inlet/ducted outlet.  
Performance ratings do not include the effects of appurtenances (Accessories).

# Series 44M Fan Dimensions with AM Adjustable Pitch Prop

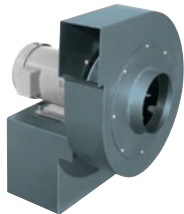


FAN SIZE	A	B	C	D	E	J	K	T	MAX MOTOR FRAME
12	12 7/8	16 7/16	15 1/8	1/4	15	9/16	12	1/4	56
14	14 7/8	18 7/16	17 1/8	1/4	15	9/16	12	1/4	182T
16	16 7/8	20 7/16	19 1/8	1/4	15	9/16	12	1/4	184T
18	18 7/8	22 7/16	21 1/8	1/4	15	9/16	12	1/4	184T
24	24 7/8	29 7/16	27 5/8	1/4	23	9/16	12	1/4	184T
28	28 7/8	33 7/16	31 5/8	1/4	23	9/16	12	1/4	184T
32	33	37 9/16	35 3/4	1/4	24	9/16	12	1/4	215T
36	37	41 9/16	39 3/4	1/4	28	9/16	12	1/4	256T
40	41	45 9/16	43 3/4	1/4	30	9/16	12	1/4	286T
44	45	49 9/16	47 3/4	1/4	32	9/16	12	1/4	326T
48	49 1/8	54 11/16	52 3/8	1/4	36	9/16	12	1/4	365T

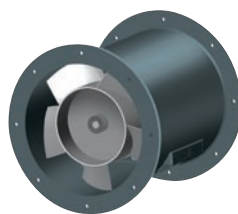
## Other Hartzell Air Movement Product Solutions for the Marine Industry



**Series 03M**  
Marine Duty Direct Drive  
Centrifugal Fan



**Series 07M**  
Marine Duty Direct Drive  
Miniature Centrifugal Fan



**Series 25M**  
Marine Duty Direct Drive  
Miniature Vaneaxial Fan



**Series 38M**  
Marine Duty Direct Drive  
Duct Fan



**Series 39M and 39VM**  
Marine Duty Direct Drive  
Adjustable Pitch Duct Fans



**Series 50M**  
Marine Duty Direct Drive  
Vaneaxial Fan



**Series 52M**  
Marine Duty Direct Drive  
Tubeaxial Fan



**Series 53CM**  
Marine Duty Direct Drive  
Vaneaxial Fan with  
C-Faced Motor



**Series 56M**  
Marine Duty Direct Drive  
Vaneaxial Fan (Type VB)



**Series 65CM and 65M**  
Marine Duty Direct Drive  
Adjustable Pitch  
Vaneaxial Fan



# Hartzell Air Movement Provides High Quality Product Solutions for the Marine Industry

---

## Features

Hartzell's extensive marine product offering provides solutions for many corrosive areas in oil rigs, workboats, and other marine applications. In addition, Hartzell marine fans are tested in accordance with AMCA standards ensuring that our fans provide the results that our customers expect.

- Hartzell has multiple coatings available, including inorganic zinc and epoxy polyamide amine. These coatings offer superior protection against the harshest marine environments.
- Hartzell offers a variety of motors for our fans, including explosion proof, modular construction, as well as high temperature options.
- Hartzell provides sound level data on all of our marine fans to help our customers select the best fan for their specific application.



- Many Hartzell fans and blowers are available from stock to best serve our customers' needs.
- Hartzell offers optional all welded fabrication in accordance with AWS D1.1.

## Benefits

Hartzell's heavy-duty marine fans can withstand the most corrosive environments. Our engineering and sales experts can help select the optimal solution for specific marine challenges.

- Hartzell offers a full line of marine products that meet low, medium, and high static pressure ranges.
- Our centrifugal fans and duct fans can be mounted in a variety of ways to meet space constraints.
- Our wide range of marine accessories provides customers with a complete engineered solution, all from one manufacturer — Hartzell.

## Applications

- Engine room supply and exhaust
- Mud pit exhaust
- Cargo hold ventilation
- Electrical room
- Equipment cooling
- Contact factory for additional applications



AIR MOVEMENT

Hartzell Air Movement  
Piqua, Ohio  
Portland, Indiana  
Singapore

1-800-336-3267

[www.hartzellairmovement.com](http://www.hartzellairmovement.com)  
[info@hartzell.com](mailto:info@hartzell.com)